

**SPONSORED BY:**

**DATES & TIME:**
**Feb. 17, 2021**
**8:00am–5:00pm PST**


- Please login to course at least **10 minutes** prior to start time
- You will receive a URL to access the live web-based course
- You will also receive **14-days FREE** access to the e-course version of this course (*Details during the live course*)

**FEES:**
**FREE** Blank Children's Hospital Employees

**CONTACT:**

Kelly Morgan

[Kelly.morgan@unitypoint.org](mailto:Kelly.morgan@unitypoint.org)

515-241-5364

**REGISTER BY:**
**1/8/2021**
**Register via  
NetLearning under  
"CPHON Review Course"**


# CPHON Review Course

**7 CONTACT  
HOURS**

## Prepare your nurses today to become certified

**COURSE OVERVIEW:**

The The Certified Pediatric Hematology Oncology Nurse (CPHON) Review Course provides a comprehensive and up-to-date review of pediatric hematology oncology nursing care based on the CPHON Exam content outline. Participants receive information that will not only promote certification exam success but will also enhance clinical nursing practice.

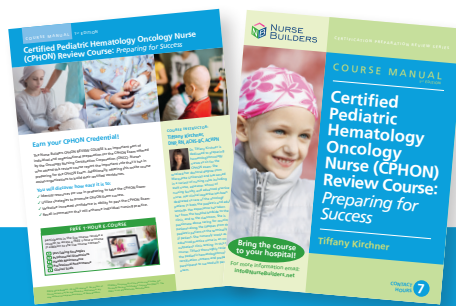
**COURSE OBJECTIVES:**

- Review and discuss pediatric hematology and oncology nursing certification exam content based on the CPHON exam content outline.
- Attain information to support and enhance pediatric hematology oncology nursing practice.

**COURSE INSTRUCTOR:**
**Kristy Feld, MSN, RN, CPHON**


Kristy Feld is dedicated to preparing hematology oncology nurses to sit for the CPHON exam. She received her Master's

in nursing education degree from Walden University and has served in a variety of nursing roles including staff nurse, care manager, and educator. She has 12 years of pediatric hematology oncology nursing experience and most recently has expanded her expertise to proton therapy. She is passionate about caring for hematology oncology patients and she currently works as a nurse educator in an outpatient hematology, oncology and bone marrow transplant clinic. In this review course, Kristy reviews the pediatric hematology/ oncology certification content and prepares participants to successfully pass the exam.



**Attendees receive a comprehensive course manual for studying!**  
(Your organization will distribute.)

**For more information about the faculty, course content, and course materials please go to [www.nursebuilders.net](http://www.nursebuilders.net)**


**Contact Hours, Disclosures, and Accreditation:**

There is no conflict of interest for anyone with the ability to control content of this activity.

Nurse Builders is accredited as a provider of nursing continuing professional development by the American Nurses Credentialing Center's Commission on Accreditation  
Nurse Builders is also a provider of continuing education by the California Board of Nursing (provider #17173) and the Florida Board of Nursing (provider #50-9679).

**Completion Criteria:**

Contact hours are awarded to participants who attend 95% of the program.

**Learner Outcome:**

The learner will be able to list 2 high priority exam content areas (i.e. ≥ 10 exam questions) based on the exam content outline/blueprint for review/studying in preparation for this national nursing certification examination.

**For more info or to register for the exam visit: [www.oncc.org](http://www.oncc.org)**

*\*Nurse Builders recommends you take the exam 3-5 weeks after participating in the review course.*