

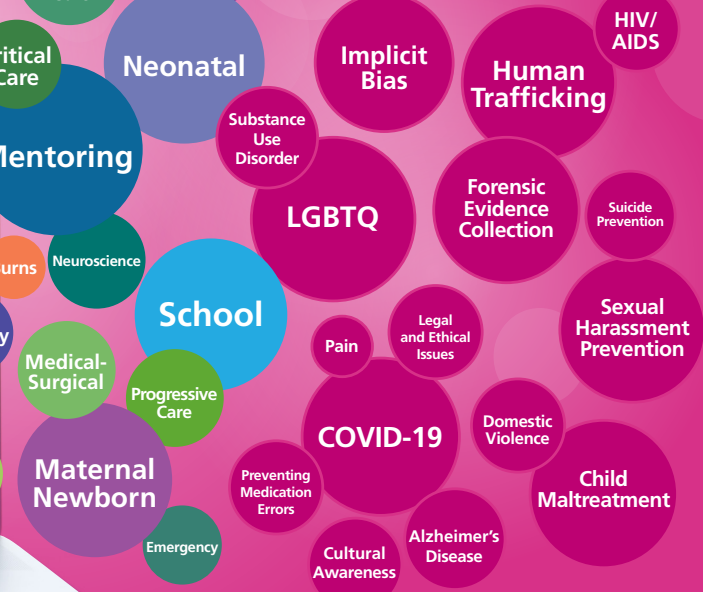
NURSING CE E-COURSES



SPECIALTY-FOCUSED CE



STATE-REQUIRED CE*



* Meets requirements for 37 states: AK, AL, AR, AZ, CA, CO, DC, FL, GA, HI, IL, ID, IN, KS, LA, ME, MN, MO, MS, MT, NC, ND, NE, NH, NJ, NM, OK, RI, SD, TN, TX, UT, VA, VT, WI, WV, WY

250+
Nursing CE
Contact
Hours

Support Clinical Practice, RN License Renewal, and Certification Renewal

INCLUSIONS:

- High-quality, evidence-based, comprehensive, up-to-date content
- Self-paced, unlimited viewing
- Video presentations with expert faculty
- Contact hours with printable certificates
- Mobile friendly
- Tech support



MOBILE READY!

HOSPITAL LICENSE OPTIONS (1-Year License with Unlimited Users)				
1 Hospital	2-5 Hospitals	6-10 Hospitals	11-20 Hospitals	>20 Hospitals
\$11,000	\$14,000	\$17,000	\$20,000	\$23,000

UNIT LICENSE OPTIONS (1-Year License with Limited Users)		
25 Users	50 Users	100 Users
\$999 (\$40/User)	\$1,249 (\$25/User)	\$1,999 (\$20/User)

INDIVIDUAL LICENSE OPTIONS	
Full Nursing CE Library	Subspecialty CE/ Certification Renewal CE
\$139 (includes all CE on platform)	\$89 (single subspecialty CE topic + professional dev. content)

Promote Engagement and Retention by Adding Mentoring E-Programs and E-Courses

Full mentoring platform includes 45+ contact hours

BENEFITS:

- Evidence-based, goals-focused
- Time and cost efficient
- Flexible design (24/7 access, mobile ready)
- Structured, mentor-mentee meetings
- Live and web educator support
- Tracks outcomes



HOSPITAL LICENSE OPTIONS (1-Year License with Unlimited Users)	
1 Hospital	\$7,500
2-5 Hospitals	\$9,000
6-10 Hospitals	\$11,000
11-20 Hospitals	\$13,000
>20 Hospitals	\$15,000