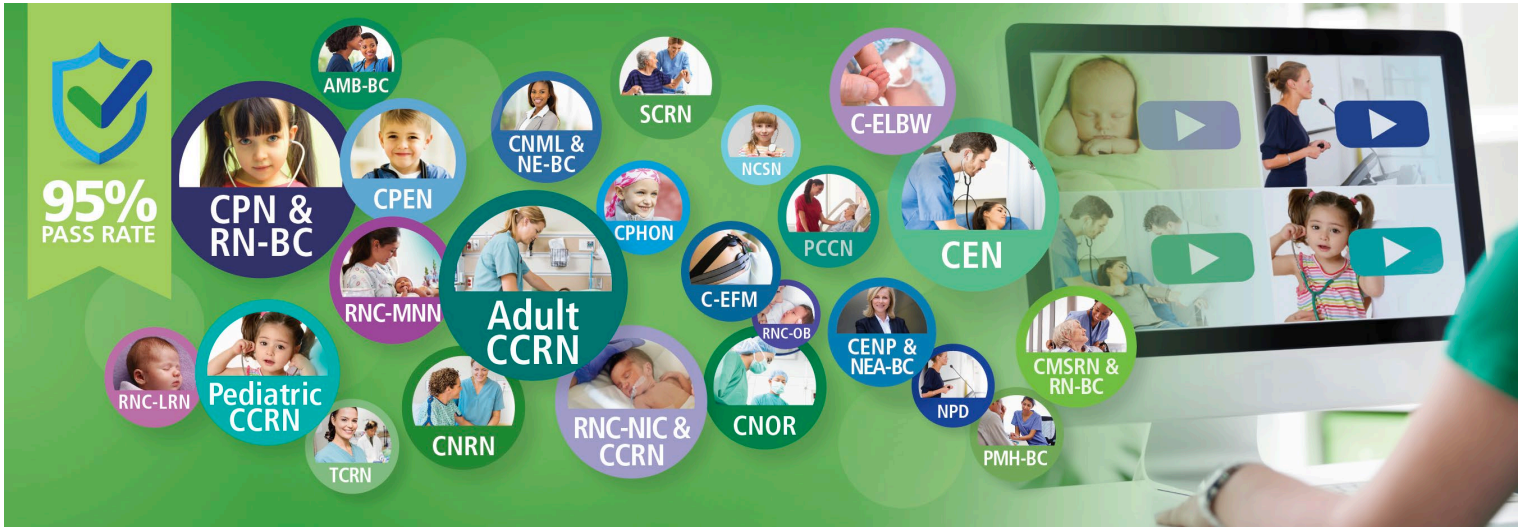


# Certifications by Accrediting Body

## ABSNC, NCCA, and ISO 17024

Certifications associated with above accrediting bodies and all ANCC certifications meet ANCC Magnet® criteria for inclusion on the Demographic Data Collection Tool (DDCT®)

\*Updated 9/30/24



**Nurse Builders provides 37 certification review courses (and more coming soon!) to help increase your organization's certification rates**

| CREDENTIAL | CERTIFICATION   | ORGANIZATION   | Review Course Provided by Nurse Builders | ABSNC | NCCA | ISO 17024 | Unknown or Renewal Only |
|------------|---|--|--|-------|------|-----------|-------------------------|
| AMB-BC     | Ambulatory Care Nursing Certification                     | <a href="http://www.nursingworld.org">www.nursingworld.org</a>             | x  | x     |      |           |                         |
| BMTCN      | Blood and Marrow Transplant Certified Nurse               | <a href="http://www.oncc.org">http://www.oncc.org</a>                      | x  |       | x    |           |                         |
| CCRN       | Acute/Critical Care Nursing (Adult, Pediatric & Neonatal) | <a href="http://www.aacn.org">www.aacn.org</a>                             | x  | x     |      |           |                         |
| C-EFM      | Electronic Fetal Monitoring                               | <a href="http://www.nccwebsite.org">www.nccwebsite.org</a>                 | x  |       | x    |           |                         |
| C-ELBW     | Extremely Low Birth Weight                                | <a href="http://www.nccwebsite.org">www.nccwebsite.org</a>                 | x  |       | x    |           |                         |
| C-ONQS     | Obstetric and Neonatal Quality and Safety                 | <a href="http://www.nccwebsite.org">www.nccwebsite.org</a>                 | x  |       | x    |           |                         |
| CCM        | Certified Case Manager                                    | <a href="http://www.ccmcertification.org">www.ccmcertification.org</a>     | x  |       | x    |           |                         |
| CEN        | Certified Emergency Nurse                                 | <a href="http://www.bcencertifications.org">www.bcencertifications.org</a> | x  | x     |      |           |                         |
| CENP       | Certified in Executive Nursing Practice                   | <a href="http://www.aone.org">www.aone.org</a>                             | x  |       | x    |           |                         |
| CHPN       | Certified Hospice and Palliative Nurse                    | <a href="http://www.gohpcc.org">www.gohpcc.org</a>                         | x  | x     |      |           |                         |
| CMC        | Cardiac Medicine (Adult)                                  | <a href="http://www.aacn.org">www.aacn.org</a>                             | x  | x     |      |           |                         |
| CMSRN      | Certified Medical-Surgical Registered Nurse               | <a href="http://www.msncb.org">www.msncb.org</a>                           | x  | x     |      |           |                         |

| CREDENTIAL | CERTIFICATION                                 | ORGANIZATION   | Review Course Provided by Nurse Builders | ABSNC | NCCA | ISO 17024 | Unknown or Renewal Only |
|------------|---|--|--|-------|------|-----------|-------------------------|
| CMGT-BC    | Nursing Case Management                       | <a href="http://www.nursingworld.org">www.nursingworld.org</a>             | x  | x     |      |           |                         |
| CNML       | Certified Nurse Manager and Leader            | <a href="http://www.aone.org">www.aone.org</a>                             | x  |       | x    |           |                         |
| CNOR       | Certified Perioperative Nurse                 | <a href="http://www.cc-institute.org">www.cc-institute.org</a>             | x  | x     | x    |           |                         |
| CNRN       | Certified Neuroscience Registered Nurse       | <a href="http://www.abnncertification.org">www.abnncertification.org</a>   | x  | x     |      |           |                         |
| CAPA       | Certified Ambulatory Perianesthesia Nurse     | <a href="http://www.cpancapanurse.org">www.cpancapanurse.org</a>           | x  | x     |      |           |                         |
| CNE        | Certified Nurse Educator                      | <a href="http://www.nln.org">www.nln.org</a>                               | x  |       |      |           | x                       |
| CPAN       | Certified Post Anesthesia Nurse               | <a href="http://www.cpancapanurse.org">www.cpancapanurse.org</a>           | x  | x     |      |           |                         |
| CPEN       | Certified Pediatric Emergency Nurse           | <a href="http://www.bcencertifications.org">www.bcencertifications.org</a> | x  | x     |      |           |                         |
| CPHON      | Certified Pediatric Hematology Oncology Nurse | <a href="http://www.oncc.org">www.oncc.org</a>                             | x  |       | x    |           |                         |
| CPN        | Certified Pediatric Nurse                     | <a href="http://www.pncb.org">www.pncb.org</a>                             | x  |       | x    |           |                         |
| CRRN       | Certified Rehabilitation Registered Nurse     | <a href="https://rehabnurse.org/">https://rehabnurse.org/</a>              | x  | x     |      |           |                         |
| CSC        | Cardiac Surgery (Adult)                       | <a href="http://www.aacn.org">www.aacn.org</a>                             | x  | x     |      |           |                         |
| CV-BC      | Cardiac Vascular Nursing Certification        | <a href="http://www.nursingworld.org">www.nursingworld.org</a>             | x  | x     |      |           |                         |
| GERO-BC    | Gerontological Nursing                        | <a href="http://www.nursingworld.org">www.nursingworld.org</a>             | x  | x     |      |           |                         |
| MEDSURG-B  | Medical-Surgical Nursing                      | <a href="http://www.nursingworld.org">www.nursingworld.org</a>             | x  | x     |      |           |                         |
| NCSN       | National Certified School Nurse               | <a href="http://www.ncbsn.org">www.ncbsn.org</a>                           | x  | x     |      |           |                         |
| NEA-BC     | Nurse Executive, Advanced                     | <a href="http://www.nursingworld.org">www.nursingworld.org</a>             | x  | x     |      |           |                         |
| NE-BC      | Nurse Executive                               | <a href="http://www.nursingworld.org">www.nursingworld.org</a>             | x  | x     |      |           |                         |
| NPD-BC     | Nursing Professional Development              | <a href="http://www.nursingworld.org">www.nursingworld.org</a>             | x  | x     |      |           |                         |
| OCN        | Oncology Certified Nurse                      | <a href="http://www.oncc.org">www.oncc.org</a>                             | x  |       | x    |           |                         |
| ONC        | Orthopedic Nurse Certified                    | <a href="http://www.oncb.org">www.oncb.org</a>                             | x  | x     |      |           |                         |
| PCCN       | Progressive Care Nursing (Adult)              | <a href="http://www.aacn.org">www.aacn.org</a>                             | x  |       | x    |           |                         |
| PED-BC     | Pediatric Nursing                             | <a href="http://www.nursingworld.org">www.nursingworld.org</a>             | x  | x     |      |           |                         |
| PMH-BC     | Psychiatric-Mental Health Nursing             | <a href="http://www.nursingworld.org">www.nursingworld.org</a>             | x  | x     |      |           |                         |
| RNC-IAP    | Inpatient Antepartum Nursing                  | <a href="http://www.nccwebsite.org">www.nccwebsite.org</a>                 | x  |       | x    |           |                         |
| RNC-LRN    | RNC-LRN - Low Risk Neonatal Nursing           | <a href="http://www.nccwebsite.org">www.nccwebsite.org</a>                 | x  |       | x    |           |                         |
| RNC-MNN    | RNC-MNN - Maternal Newborn Nursing            | <a href="http://www.nccwebsite.org">www.nccwebsite.org</a>                 | x  |       | x    |           |                         |

| CREDENTIAL | CERTIFICATION                             | ORGANIZATION   | Review Course Provided by Nurse Builders | ABSNC | NCCA | ISO 17024 | Unknown or Renewal Only |
|------------|---|--|--|-------|------|-----------|-------------------------|
| RNC-NIC    | RNC-NIC - Neonatal Intensive Care Nursing | <a href="http://www.nccwebsite.org">www.nccwebsite.org</a>               | x  |       | x    |           |                         |
| RNC-OB     | RNC-OB - Inpatient Obstetric Nursing      | <a href="http://www.nccwebsite.org">www.nccwebsite.org</a>               | x  |       | x    |           |                         |
| SCRN       | Stroke Certified Registered Nurse         | <a href="http://www.abnncertification.org">www.abnncertification.org</a> | x  | x     |      |           |                         |
| TCRN       | Trauma Certified Registered Nurse         | <a href="http://www.bcncertifications.org">www.bcncertifications.org</a> | x  | x     |      |           |                         |

## Additional Certifications by Accrediting Body ABSNC, NCCA, and ISO 17024

\*Updated 9/30/24

| CREDENTIAL | CERTIFICATION   | ORGANIZATION  | ABSNC | NCCA | ISO 17024 | Unknown or Renewal Only |
|------------|---|---|-------|------|-----------|-------------------------|
| AACRN      | Advanced HIV/AIDS Certified Registered Nurse                                | <a href="http://www.hanccb.org">www.hanccb.org</a>                                  |       |      |           | x                       |
| ACHPN      | Advanced Certified Hospice and Palliative Nurse                             | <a href="http://www.gohpcc.org">www.gohpcc.org</a>                                  | x     |      |           |                         |
| ACCNS-AG   | Adult Gerontology Clinical Nurse Specialist                                 | <a href="http://www.aacn.org">http://www.aacn.org</a>                               |       | x    |           |                         |
| ACCNS-N    | Neonatal Clinical Nurse Specialist  | <a href="http://www.aacn.org">http://www.aacn.org</a>                               |       | x    |           |                         |
| ACCNS-P    | Pediatric Clinical Nurse Specialist   | <a href="http://www.aacn.org">http://www.aacn.org</a>                               |       | x    |           |                         |
| ACNPC-AG   | Adult Gerontology Acute Care Nurse Practitioner                             | <a href="http://www.aacn.org">http://www.aacn.org</a>                               |       | x    |           |                         |
| ACRN       | HIV/AIDS Certified Registered Nurse   | <a href="http://www.hanccb.org">www.hanccb.org</a>                                  |       |      |           | x                       |
| AE-C       | Certified Asthma Educator   | <a href="http://www.naecb.org">www.naecb.org</a>                                    |       | x    |           |                         |
| AFN-BC     | Advanced Forensic Nursing (renewal only)                                    | <a href="http://www.forensicnurses.org">www.forensicnurses.org</a>                  |       |      |           | x                       |
| AGACNP     | Adult-Gerontology Acute Care Nurse Practitioner                             | <a href="https://www.nursingworld.org/ancc/">https://www.nursingworld.org/ancc/</a> |       | x    |           |                         |
| AGCNS-BC   | Adult-Gerontology Clinical Nurse Specialist Certification                   | <a href="https://www.nursingworld.org/ancc/">https://www.nursingworld.org/ancc/</a> |       | x    |           |                         |
| AGNP       | Adult-Gerontology Primary Care Nurse Practitioner                           | <a href="http://www.aanpcert.org">http://www.aanpcert.org</a>                       |       | x    |           |                         |
| AGPCNP     | Adult-Gerontology Primary Care Nurse Practitioner                           | <a href="https://www.nursingworld.org/ancc/">https://www.nursingworld.org/ancc/</a> |       | x    |           |                         |
| AHN-BC     | Advanced Holistic Nurse, Board Certified                                    | <a href="http://www.ahncc.org">www.ahncc.org</a>                                    | x     |      |           |                         |
| AOCNP      | Advanced Oncology Certified Nurse Practitioner                              | <a href="http://www.oncc.org">http://www.oncc.org</a>                               |       | x    |           |                         |
| APHN-BC    | Advanced Practice Holistic Nurse  | <a href="http://www.ahncc.org">www.ahncc.org</a>                                    | x     |      |           |                         |
| CANS       | Certified Aesthetic Nurse Specialist  | <a href="https://www.psncc.org/">https://www.psncc.org/</a>                         | x     |      |           |                         |
| CARN       | Certified Addictions Registered Nurse                                       | <a href="http://www.cnetnurse.com">www.cnetnurse.com</a>                            | x     |      |           |                         |
| CBC        | Certified Breast Feeding Counselor  | <a href="http://www.childbirtheeducation.org">www.childbirtheeducation.org</a>      |       |      |           | x                       |
| CBCN       | Certified Breast Care Nurse   | <a href="http://www.oncc.org">www.oncc.org</a>                                      |       | x    |           |                         |
| CCCN       | Certified Continence Care Nurse   | <a href="http://www.wocncc.org">www.wocncc.org</a>                                  | x     | x    |           |                         |
| CCE        | Certified Childbirth Educator   | <a href="http://www.childbirtheeducation.org">www.childbirtheeducation.org</a>      |       |      |           | x                       |
| CCHT       | Certified Clinical Hemodialysis Technician                                  | <a href="http://www.nncc-exam.org">www.nncc-exam.org</a>                            | x     |      |           |                         |
| CCNS       | Acute/Critical Care Clinical Nurse Specialist (Adult, Pediatric & Neonatal) | <a href="http://www.aacn.org">www.aacn.org</a>                                      | x     |      |           |                         |
| CCRN-E     | Tele-ICU Acute/Critical Care Nursing (Adult)                                | <a href="http://www.aacn.org">www.aacn.org</a>                                      | x     |      |           |                         |

| CREDENTIAL | CERTIFICATION  | ORGANIZATION  | ABSNC | NCCA | ISO 17024 | Unknown or Renewal Only |
|------------|--|---|-------|------|-----------|-------------------------|
| CCRN-K     | Acute/Critical Care Knowledge Professional (Adult, Pediatric & Neonatal) | <a href="http://www.aacn.org">www.aacn.org</a>  | x     |      |           |                         |
| CCRP       | Certified Clinical Research Professional                                 | <a href="http://www.socra.org">www.socra.org</a>  |       | x    |           |                         |
| CCTC       | Certified Clinical Transplant Coordinator                                | <a href="http://www.abtc.net">http://www.abtc.net</a>   |       | x    |           |                         |
| CCTM       | Certified in Care Coordination and Transition Management                 | <a href="http://www.msncb.org">www.msncb.org</a>  |       |      |           | x                       |
| CCTN       | Certified Clinical Transplant Nurse                                      | <a href="http://www.abtc.net">http://www.abtc.net</a>   |       | x    |           |                         |
| CDE        | Certified Diabetes Educator  | <a href="http://www.ncbde.org">www.ncbde.org</a>  |       |      |           | x                       |
| CD-LPN     | Certified Dialysis Licensed Practical Nurse                              | <a href="http://www.nncc-exam.org">www.nncc-exam.org</a>  |       |      |           | x                       |
| CDMS       | Certified Disability Management Specialist                               | <a href="http://www.cdms.org">www.cdms.org</a>  |       | x    |           |                         |
| CDN        | Certified Dialysis Nurse   | <a href="http://www.nncc-exam.org">www.nncc-exam.org</a>  | x     |      |           |                         |
| CFCN       | Certified Foot Care Nurse  | <a href="https://www.wocncb.org/">https://www.wocncb.org/</a>                                     | x     |      |           |                         |
| CFPN       | Certified Foundational Perioperative Nurse                               | <a href="https://www.cc-institute.org/">https://www.cc-institute.org/</a>                         | x     |      |           |                         |
| CFRN       | Certified Flight Registered Nurse  | <a href="http://www.bcencertifications.org">www.bcencertifications.org</a>                        | x     |      |           |                         |
| CGRN       | Certified Gastroenterology Registered Nurse                              | <a href="http://www.abcgcn.org">www.abcgcn.org</a>  | x     |      |           |                         |
| CHAA       | Certified Healthcare Access Associate                                    | <a href="http://www.naham.org/">http://www.naham.org/</a>   |       | x    |           |                         |
| CHAM       | Certified Healthcare Access Manager                                      | <a href="http://www.naham.org/">http://www.naham.org/</a>   |       | x    |           |                         |
| CHFN       | Certified Heart Failure Nurse  | <a href="http://www.aahfn.org">www.aahfn.org</a>  |       |      |           | x                       |
| CHFN-K     | Non-Clinical Heart Failure Nurse   | <a href="http://www.aahfn.org">www.aahfn.org</a>  |       |      |           | x                       |
| CHPLN      | Certified Hospice and Palliative Licensed Nurse                          | <a href="https://www.advancingexpertcare.org/hpcc/">https://www.advancingexpertcare.org/hpcc/</a> | x     |      |           |                         |
| CHPNA      | Certified Hospice and Palliative Nursing Assistant                       | <a href="https://www.advancingexpertcare.org/hpcc/">https://www.advancingexpertcare.org/hpcc/</a> | x     |      |           |                         |
| CHPPN      | Certified Hospice and Palliative Pediatric Nurse                         | <a href="http://www.gohpcc.org">www.gohpcc.org</a>  | x     |      |           |                         |
| CIC        | Certified in Infection Control   | <a href="http://www.cbic.org">www.cbic.org</a>  |       | x    |           |                         |
| CLC        | Certified Lactation Counselor  | <a href="http://www.centerforbreastfeeding.org">www.centerforbreastfeeding.org</a>                |       |      |           | x                       |
| CM         | Occupational Health Nursing Case Management                              | <a href="http://www.abohn.org">www.abohn.org</a>  |       |      |           | x                       |
| CNAMB      | Certified Ambulatory Surgery Nurse                                       | <a href="http://www.cc-institute.org">www.cc-institute.org</a>                                    | x     |      |           |                         |
| CNE-cl     | Certified Academic Clinical Nurse Educator                               | <a href="http://www.nln.org">www.nln.org</a>  |       |      |           | x                       |
| CNL        | Clinical Nurse Leader  | <a href="http://www.aacnnursing.org">www.aacnnursing.org</a>                                      |       | x    |           |                         |
| CNN        | Certified Nephrology Nurse   | <a href="http://www.nncc-exam.org">www.nncc-exam.org</a>  | x     |      |           |                         |
| C-NPT      | Neonatal Pediatric Transport   | <a href="http://www.nccwebsite.org">www.nccwebsite.org</a>  |       | x    |           |                         |

| CREDENTIAL | CERTIFICATION   | ORGANIZATION   | ABSNC | NCCA | ISO 17024 | Unknown or Renewal Only |
|------------|---|--|-------|------|-----------|-------------------------|
| COCN       | Certified Ostomy Care Nurse                           | <a href="http://www.wocncb.org">www.wocncb.org</a>                         | x     |      |           |                         |
| COHN       | Certified Occupational Health Nurse                   | <a href="http://www.abohn.org">www.abohn.org</a>                           |       |      |           | x                       |
| COHN-S     | Certified Occupational Health Nurse - Specialist      | <a href="https://www.abohn.org">https://www.abohn.org</a>                  |       | x    |           |                         |
| CORLN      | Certified Otorhinolaryngology Nurse                   | <a href="http://www.sohnnurse.com">www.sohnnurse.com</a>                   |       |      |           | x                       |
| CPHQ       | Certified Professional in Healthcare Quality          | <a href="http://www.cphq.org">www.cphq.org</a>                             |       | x    |           |                         |
| CPHRM      | Certified Professional in Healthcare Risk Management  | <a href="http://www.aha.org">www.aha.org</a>                               |       |      |           | x                       |
| CPNP-AC    | Certified Pediatric Nurse Practitioner - Acute Care   | <a href="http://www.pncb.org">http://www.pncb.org</a>                      |       | x    |           |                         |
| CPNP-PC    | Certified Pediatric Nurse Practitioner - Primary Care | <a href="http://www.pncb.org">http://www.pncb.org</a>                      |       | x    |           |                         |
| CPON       | Certified Pediatric Oncology Nurse                    | <a href="http://www.oncc.org">www.oncc.org</a>                             |       |      |           | x                       |
| CPPS       | Certified Professional in Patient Safety              | <a href="http://www.ihi.org/cpps">http://www.ihi.org/cpps</a>              |       | x    |           |                         |
| CPSN       | Certified Plastic Surgical Nurse                      | <a href="http://www.psnbc.org">www.psnbc.org</a>                           | x     |      |           |                         |
| CPTC       | Certified Procurement Transplant Coordinator          | <a href="http://www.abtc.net">http://www.abtc.net</a>                      |       | x    |           |                         |
| CRN        | Certified Radiologic Nurse                            | <a href="http://www.arinursing.org">www.arinursing.org</a>                 | x     |      |           |                         |
| CRNA       | Certified Registered Nurse Anesthetist                | <a href="https://www.nbcna.com/">https://www.nbcna.com/</a>                |       | x    |           |                         |
| CRNI       | Certified Registered Nurse Infusion                   | <a href="http://www.ins1.org">www.ins1.org</a>                             | x     |      |           |                         |
| CRNO       | Certification for Registered Nurses of Ophthalmology  | <a href="http://www.asorn.org">www.asorn.org</a>                           |       |      |           | x                       |
| CSSM       | Certified Surgical Services Manager                   | <a href="http://www.cc-institute.org">www.cc-institute.org</a>             | x     |      |           |                         |
| CTRN       | Certified Transport Registered Nurse                  | <a href="http://www.bcencertifications.org">www.bcencertifications.org</a> |       |      |           | x                       |
| CUNP       | Certified Urology Nurse Practitioner                  | <a href="https://www.sunu.org/">https://www.sunu.org/</a>                  | x     |      |           |                         |
| CURN       | Certified Urologic Registered Nurse                   | <a href="http://www.cbuna.org">www.cbuna.org</a>                           | x     |      |           |                         |
| CWCA       | Certified Wound Care Associate                        | <a href="http://www.abwmcertified.org">http://www.abwmcertified.org</a>    |       | x    |           |                         |
| CWCN       | Certified Wound Care Nurse                            | <a href="http://www.wocncb.org">www.wocncb.org</a>                         | x     |      |           |                         |
| CWOCN      | Certified Wound Ostomy Continence Nurse               | <a href="http://www.wocncb.org">www.wocncb.org</a>                         | x     |      |           |                         |
| CWON       | Certified Wound Ostomy Nurse                          | <a href="http://www.wocncb.org">www.wocncb.org</a>                         | x     |      |           |                         |
| CWS        | Certified Wound Specialist                            | <a href="http://www.abwmcertified.org">http://www.abwmcertified.org</a>    |       | x    |           |                         |
| DNC        | Dermatology Nurse Certified                           | <a href="http://www.dnanurse.org">www.dnanurse.org</a>                     |       |      |           | x                       |
| ENP        | Emergency Nurse Practitioner                          | <a href="http://www.aanpcert.org">http://www.aanpcert.org</a>              |       | x    |           |                         |
| FNP        | Family Nurse Practitioner                             | <a href="http://www.aanpcert.org">http://www.aanpcert.org</a>              |       | x    |           |                         |

| CREDENTIAL | CERTIFICATION                                      | ORGANIZATION  | ABSNC | NCCA | ISO 17024 | Unknown or Renewal Only |
|------------|--|---|-------|------|-----------|-------------------------|
| HNB-BC     | Holistic Baccalaureate Nurse, Board Certified      | <a href="http://www.ahncc.org">www.ahncc.org</a>                                      | x     |      |           |                         |
| HN-BC      | Holistic Nurse, Board Certified                    | <a href="http://www.ahncc.org">www.ahncc.org</a>                                      | x     |      |           |                         |
| HWNC-BC    | Health and Wellness Nurse Coach, Board Certified   | <a href="http://www.ahncc.org">www.ahncc.org</a>                                      |       |      |           | x                       |
| IBCLC      | International Board Certified Lactation Consultant | <a href="http://www.iblce.org">www.iblce.org</a>                                      |       | x    |           |                         |
| INPT       | Inpatient Obstetric Nursing                        | <a href="http://www.nccwebsite.org">http://www.nccwebsite.org</a>                     |       | x    |           |                         |
| LCCE       | Lamaze Certified Childbirth Educator               | <a href="http://www.lamaze.org">www.lamaze.org</a>                                    |       | x    |           |                         |
| LNCC       | Legal Nurse Consultant Certified                   | <a href="https://lncc.aalnc.org">https://lncc.aalnc.org</a>                           | x     |      |           |                         |
| NC-BC      | Nurse Coach, Board Certified                       | <a href="http://www.ahncc.org">www.ahncc.org</a>                                      | x     |      |           |                         |
| NI-BC      | Informatics Nursing Certification                  | <a href="https://www.nursingworld.org/ahncc/">https://www.nursingworld.org/ahncc/</a> |       | x    |           |                         |
| NNP        | Neonatal Nurse Practitioner                        | <a href="https://www.nccwebsite.org/">https://www.nccwebsite.org/</a>                 | x     |      |           |                         |
| NNP        | Neonatal Nurse Practitioner                        | <a href="http://www.nccwebsite.org">http://www.nccwebsite.org</a>                     |       | x    |           |                         |
| NPT        | Neonatal Pediatric Transport                       | <a href="http://www.nccwebsite.org">http://www.nccwebsite.org</a>                     |       | x    |           |                         |
| NSPM       | Nonsurgical Pain Management                        | <a href="http://www.nbcna.com">http://www.nbcna.com</a>                               |       | x    |           |                         |
| NSPM-C     | Nonsurgical Pain Management                        | <a href="https://www.nbcna.com/">https://www.nbcna.com/</a>                           | x     |      |           |                         |
| PCCN-K     | Progressive Care Knowledge Professional (Adult)    | <a href="http://www.aacn.org">www.aacn.org</a>  |       |      |           | x                       |
| PMGT-BC    | Pain Management Nursing                            | <a href="http://www.nursingworld.org">www.nursingworld.org</a>                        | x     |      |           |                         |
| PMHNP      | Psychiatric-Mental Health Nurse Practitioner       | <a href="https://www.nursingworld.org/ahncc/">https://www.nursingworld.org/ahncc/</a> |       | x    |           |                         |
| PMHS       | Pediatric Primary Care Mental Health Specialist    | <a href="http://www.pncb.org">http://www.pncb.org</a>                                 |       | x    |           |                         |
| RN-BC      | Informatics Nursing                                | <a href="http://www.nursingworld.org">www.nursingworld.org</a>                        | x     |      |           |                         |
| RN-BC      | Faith Community Nursing (renewal only)             | <a href="http://www.nursingworld.org">www.nursingworld.org</a>                        |       |      |           | x                       |
| RN-BC      | Genetics Nursing, Advanced (renewal only)          | <a href="http://www.nursingworld.org">www.nursingworld.org</a>                        |       |      |           | x                       |
| RN-BC      | Hemostasis Nursing (renewal only)                  | <a href="http://www.nursingworld.org">www.nursingworld.org</a>                        |       |      |           | x                       |
| RN-BC      | Rheumatology Nursing (renewal only)                | <a href="http://www.nursingworld.org">www.nursingworld.org</a>                        |       |      |           | x                       |
| SANE-A     | Sexual Assault Nurse Examiner - Adult/Adolescent   | <a href="http://www.forensicnurses.org">www.forensicnurses.org</a>                    |       |      |           | x                       |
| SANE-P     | Sexual Assault Nurse Examiner - Pediatric          | <a href="http://www.forensicnurses.org">www.forensicnurses.org</a>                    |       |      |           | x                       |
| WCC        | Wound Care Certified                               | <a href="http://nawccb.org">http://nawccb.org</a>                                     |       | x    |           |                         |
| WHCNP      | Women's Health Care Nurse Practitioner             | <a href="https://www.nccwebsite.org/">https://www.nccwebsite.org/</a>                 | x     |      |           |                         |
| WHNP       | Women's Health Care Nurse Practitioner             | <a href="http://www.nccwebsite.org">http://www.nccwebsite.org</a>                     |       | x    |           |                         |

